



RIVERSIDE CHRISTIAN COLLEGE

Portal > Knowledgebase > Office 365 > Sign in to Office 365

Sign in to Office 365

Jesse Slade - 2024-04-28 - 0 Comments - in Office 365

Every Riverside staff member and student has access to Microsoft Office 365 free of charge.

This means you can access your emails, OneDrive and SharePoint files, download a copy of office onto your home computer and more through www.office.com . Follow the instructions below to sign into office and you will also automagically be signed into Schoology,

ClickView, Student Cafe and many other sites that use a Microsoft ID.

1. Open a web browser (Chrome, Firefox, Safari)

2. Type URL

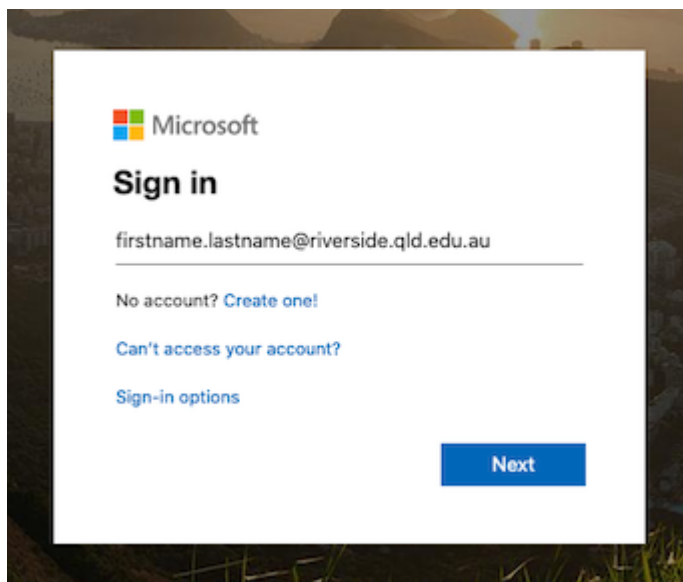
www.office.com

3. Select 'Sign in'



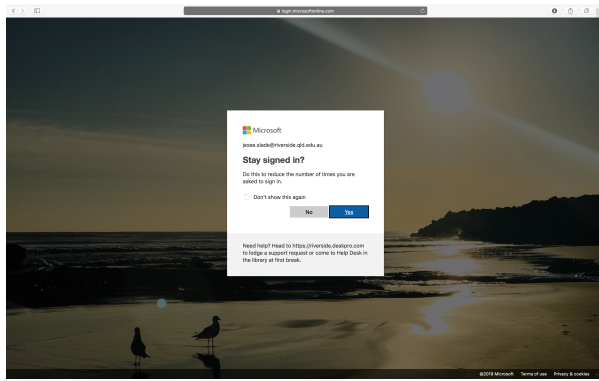
4. Sign in with your Riverside Christian College email.

firstname.lastname@riverside.qld.edu.au (eg. john.smtih@riverside.qld.edu.au)



5. You will be prompted with an option to stay signed in. This will keep you logged into Office 365 unless you log out.

(This is personal choice)



6. You will then be able to access all of your Office 365 Applications.



Comments (0)
